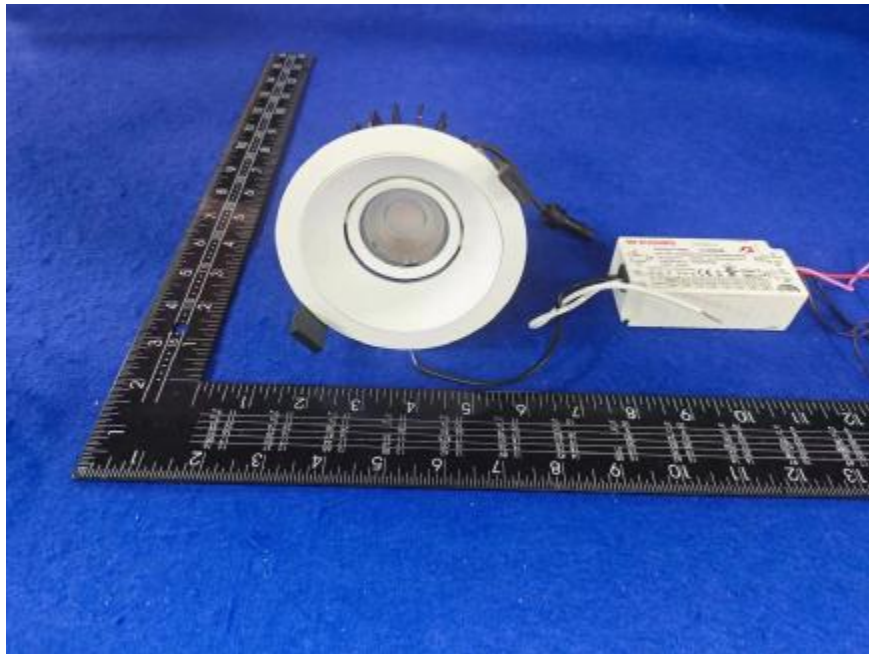


Luminaire Photograph



Light Output Ratio:	78.0%	
Luminaire Power:	17.33 W	
SHR Nominal:	0.50	Calculated using the TM5
SHR Maximum:	0.65	fine grid method.

C Range: 0 - 360DEG
C Interval: 30.0DEG
Test Speed: MEDIUM
Temperature: 25.3 °C
Operators: zoe
Test Date: 2023-7-12

γ Range: 0 - 180DEG
γ Interval: 1.0DEG
Test System: EVERFINE GO-SPEX500_V1 SYSTEM V2.00.461
Humidity: 65.0%
Test Distance: 3.160m [K=1.0000]
Remarks: LAMP: BXRV-DR-1830G-1000-K-23 Ra: 90
LENS: PM-1096B 36R
DRIVER: PUP20A-1WMC 450mA
30minutes warm-up

LUMINOUS INTENSITY DISTRIBUTION DIAGRAM

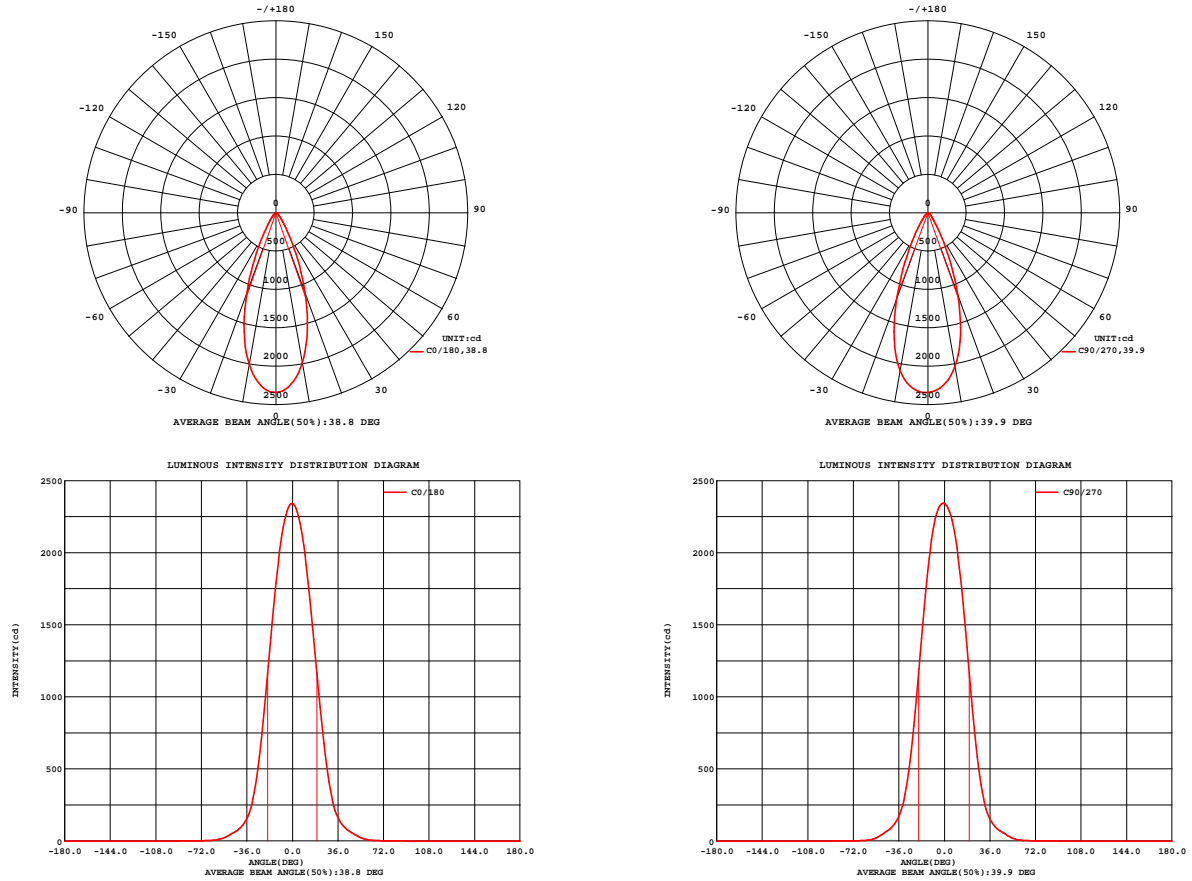


Fig. C0/C180

Fig. C90/C270

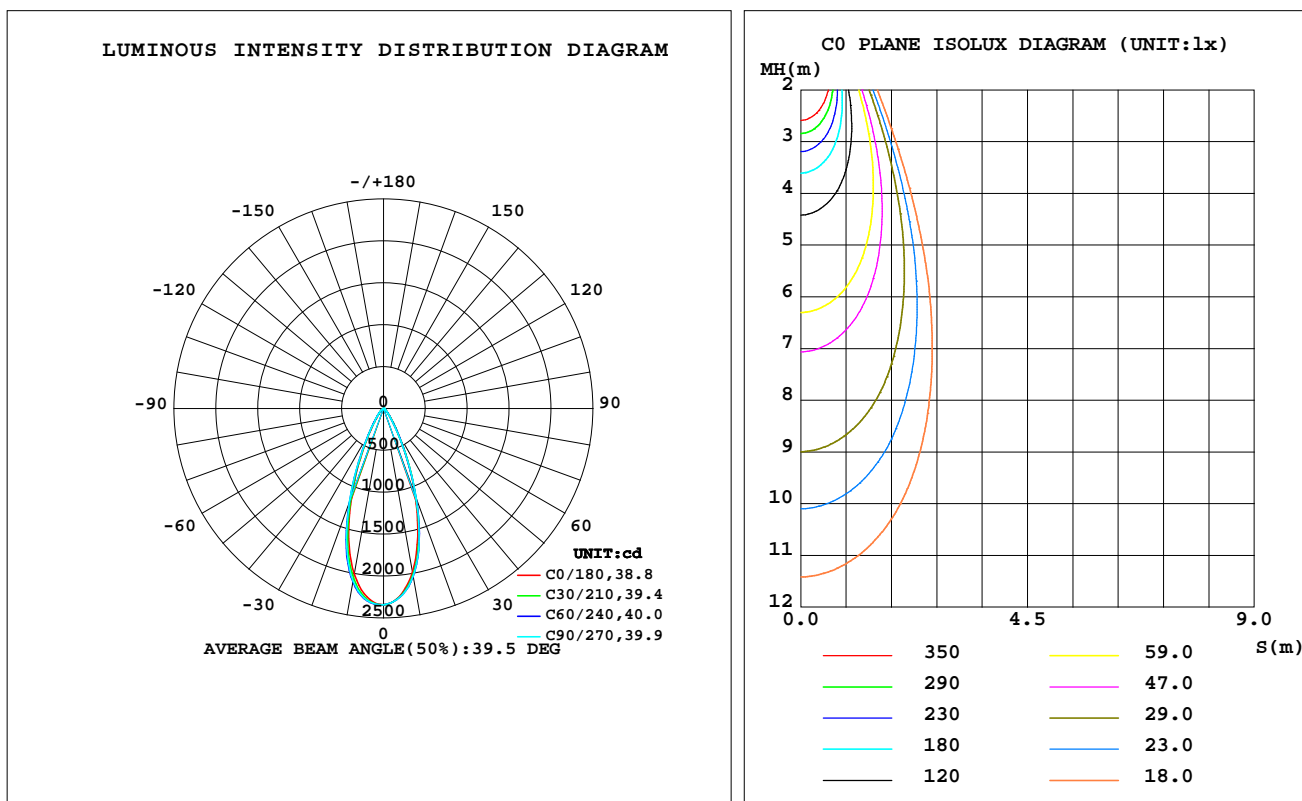
C Range: 0 - 360DEG
C Interval: 30.0DEG
Test Speed: MEDIUM
Temperature: 25.3 °C
Operators: zoe
Test Date: 2023-7-12

γ Range: 0 - 180DEG
γ Interval: 1.0DEG
Test System: EVERFINE GO-SPEX500_V1 SYSTEM V2.00.461
Humidity: 65.0%
Test Distance: 3.160m [K=1.0000]
Remarks: LAMP: BXR-V-DR-1830G-1000-K-23 Ra: 90
LENS: PM-1096B 36R
DRIVER: PUP20A-1WMC 450mA
30minutes warm-up

LUMINAIRE PHOTOMETRIC TEST REPORT

Test:U:120.08V I:0.1451A P:17.330W PF:0.9933 Freq:59.98Hz Lamp Flux:1493.63x1 lm		
NAME: 2118.192-LEA-15-DW	TYPE:	WEIGHT:
SPEC.: 3000K	DIM.:	SERIAL No.: 2307120893
MFR.: RISE	SUR.: 0.0063585m2	Shielding Angle:

DATA OF LAMP		PHOTOMETRIC DATA Eff: 67.22 lm/W			
MODEL	Bridgelux	Imax(cd)	2344	S/MH(C0/180)	0.62
NOMINAL POWER(W)	17	LOR(%)	78.0	S/MH(C90/270)	0.64
RATED VOLTAGE(V)	120	TOTAL FLUX(lm)	1165.0	η UP,DN(C0-180)	0.0,38.5
NOMINAL FLUX(lm)	1493.63	CIE CLASS	DIRECT	η UP,DN(C180-360)	0.0,39.5
LAMPS INSIDE	1	η up(%)	0.0	CIBSE SHR NOM	0.50
TEST VOLTAGE(V)	120	η down(%)	78.0	CIBSE SHR MAX	0.65



C Range: 0 - 360DEG
C Interval: 30.0DEG
Test Speed: MEDIUM
Temperature:25.3℃
Operators:zoe
Test Date:2023-7-12

γ Range: 0 - 180DEG
 γ Interval: 1.0DEG
Test System:EVERFINE GO-SPEX500_V1 SYSTEM V2.00.461
Humidity:65.0%
Test Distance:3.160m [K=1.0000]
Remarks: LAMP:BXRV-DR-1830G-1000-K-23 Ra:90
LENS: PM-1096B 36R
DRIVER: PUP20A-1WMC 450mA
30minutes warm-up

ZONAL FLUX DIAGRAM

ZONAL FLUX DIAGRAM:

γ	C0	C45	C90	C135	C180	C225	C270	C315	γ	Φ zone	Φ total	%lum,lamp
10	1987	2029	2033	1997	2009	2082	2091	2016	0- 10	208.8	208.8	17.9,14
20	1112	1140	1138	1109	1116	1176	1194	1142	10- 20	445.1	653.9	56.1,43.8
30	355.9	354.9	339.2	331.6	337.6	360.3	370.4	361.8	20- 30	313.4	967.3	83,64.8
40	108.0	107.7	101.9	99.79	102.2	110.3	111.4	109.0	30- 40	121.4	1089	93.5,72.9
50	40.83	40.65	36.94	38.59	39.34	40.89	40.00	40.65	40- 50	53.06	1142	98,76.4
60	7.665	7.049	5.559	6.762	7.316	6.572	5.547	6.689	50- 60	17.98	1160	99.5,77.6
70	2.050	2.010	1.908	2.065	2.134	1.861	1.689	1.785	60- 70	3.547	1163	99.9,77.9
80	0.8303	0.7563	0.6623	0.8103	0.9546	0.7074	0.5813	0.6750	70- 80	1.420	1165	100,78
90	0	0	0	0	0	0	0	0	80- 90	0.2911	1165	100,78
100	0	0	0	0	0	0	0	0	90-100	0	1165	100,78
110	0	0	0	0	0	0	0	0	100-110	0	1165	100,78
120	0	0	0	0	0	0	0	0	110-120	0	1165	100,78
130	0	0	0	0	0	0	0	0	120-130	0	1165	100,78
140	0	0	0	0	0	0	0	0	130-140	0	1165	100,78
150	0	0	0	0	0	0	0	0	140-150	0	1165	100,78
160	0	0	0	0	0	0	0	0	150-160	0	1165	100,78
170	0	0	0	0	0	0	0	0	160-170	0	1165	100,78
180	0	0	0	0	0	0	0	0	170-180	0	1165	100,78
DEG	LUMINOUS INTENSITY:cd									UNIT:lm		

C Range: 0 - 360DEG
C Interval: 30.0DEG
Test Speed: MEDIUM
Temperature:25.3℃
Operators:zoe
Test Date:2023-7-12

γ Range: 0 - 180DEG
 γ Interval: 1.0DEG
Test System:EVERFINE GO-SPEX500_V1 SYSTEM V2.00.461
Humidity:65.0%
Test Distance:3.160m [K=1.0000]
Remarks: LAMP:BXRV-DR-1830G-1000-K-23 Ra:90
LENS: PM-1096B 36R
DRIVER: PUP20A-1WMC 450mA
30minutes warm-up

LUMINANCE LIMITATION CURVES

Test:U:120.08V I:0.1451A P:17.330W PF:0.9933 Freq:59.98Hz
Lamp Flux:1493.63x1 lm

NAME: 2118.192-LEA-15-DW

TYPE:

WEIGHT:

SPEC.: 3000K

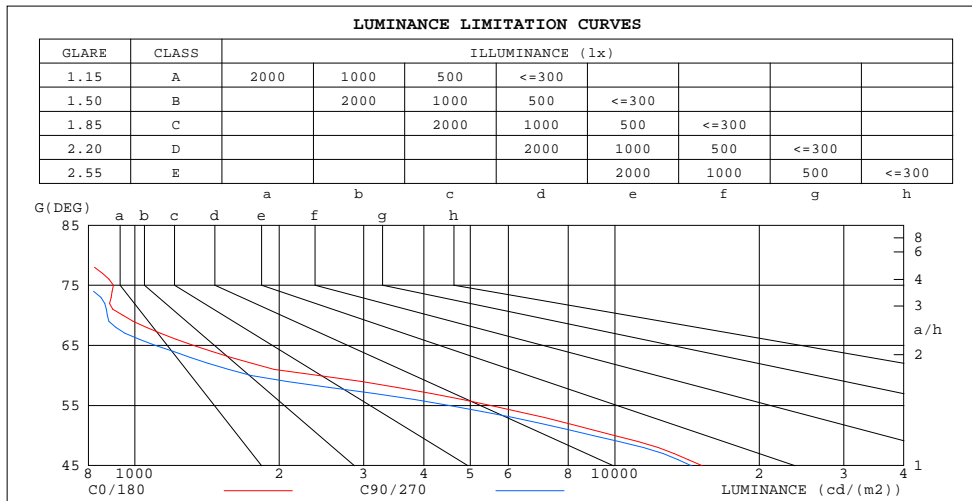
DIM.:

SERIAL No.: 2307120893

MFR.: RISE

SUR.: 0.0063585m2

Shielding Angle:



C Range: 0 - 360DEG
C Interval: 30.0DEG
Test Speed: MEDIUM
Temperature:25.3 °C
Operators:zoe
Test Date:2023-7-12

γ Range: 0 - 180DEG
γ Interval: 1.0DEG
Test System:EVERFINE GO-SPEX500_V1 SYSTEM V2.00.461
Humidity:65.0%
Test Distance:3.160m [K=1.0000]
Remarks: LAMP:BXRV-DR-1830G-1000-K-23 Ra:90
LENS: PM-1096B 36R
DRIVER: PUP20A-1WMC 450mA
30minutes warm-up

CU AND LUMINAIRE BUDGETARY ESTIMATE DIAGRAM

Test:U:120.08V I:0.1451A P:17.330W PF:0.9933 Freq:59.98Hz
Lamp Flux:1493.63x1 lm

NAME: 2118.192-LEA-15-DW

TYPE:

WEIGHT:

SPEC.: 3000K

DIM.:

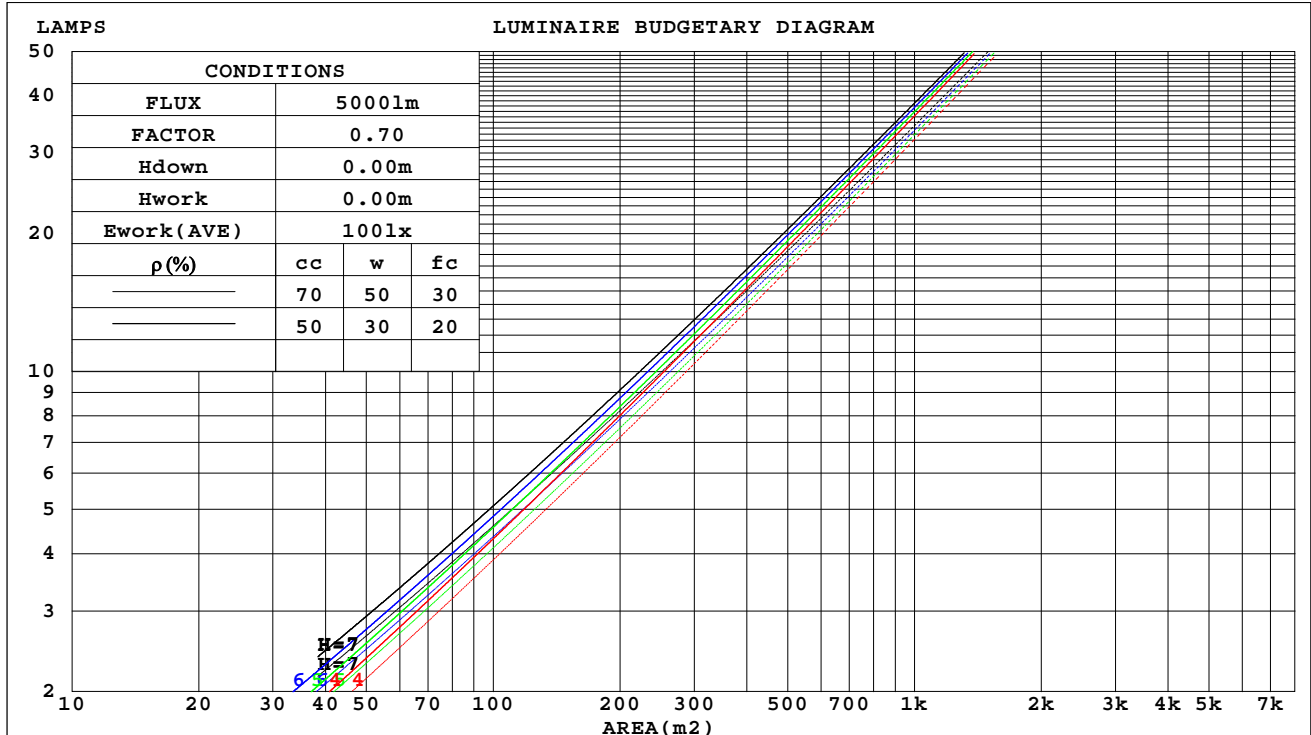
SERIAL No.: 2307120893

MFR.: RISE

SUR.: 0.0063585m2

Shielding Angle:

ρ_{cc}	80%			70%			50%			30%			10%			0
ρ_w	50%	30%	10%	50%	30%	10%	50%	30%	10%	50%	30%	10%	50%	30%	10%	0
ρ_{fc}	20%			20%			20%			20%			20%			0
RCR	RCR:Room Cavity Ratio Coefficients of Utilization(CU)															
0.0	.93	.93	.93	.91	.91	.91	.87	.87	.87	.83	.83	.83	.80	.80	.80	.78
1.0	.87	.85	.84	.85	.84	.82	.82	.81	.80	.79	.78	.77	.77	.76	.75	.74
2.0	.82	.79	.76	.80	.78	.76	.78	.76	.74	.76	.74	.72	.73	.72	.71	.70
3.0	.77	.73	.71	.76	.73	.70	.74	.71	.69	.72	.70	.68	.70	.69	.67	.66
4.0	.73	.69	.66	.72	.68	.66	.70	.67	.65	.69	.66	.64	.67	.65	.63	.62
5.0	.69	.65	.62	.68	.64	.62	.67	.64	.61	.66	.63	.61	.64	.62	.60	.59
6.0	.65	.61	.58	.65	.61	.58	.64	.60	.58	.63	.60	.57	.62	.59	.57	.56
7.0	.62	.58	.55	.62	.58	.55	.61	.57	.55	.60	.57	.55	.59	.56	.54	.53
8.0	.59	.55	.52	.59	.55	.52	.58	.55	.52	.57	.54	.52	.57	.54	.52	.51
9.0	.57	.53	.50	.56	.53	.50	.56	.52	.50	.55	.52	.50	.54	.52	.49	.49
10.0	.54	.50	.48	.54	.50	.48	.53	.50	.48	.53	.50	.47	.52	.49	.47	.46



C Range: 0 - 360DEG
C Interval: 30.0DEG
Test Speed: MEDIUM
Temperature:25.3℃
Operators:zoe
Test Date:2023-7-12

γ Range: 0 - 180DEG
 γ Interval: 1.0DEG
Test System:EVERFINE GO-SPEX500_V1 SYSTEM V2.00.461
Humidity:65.0%
Test Distance:3.160m [K=1.0000]
Remarks: LAMP:BXRV-DR-1830G-1000-K-23 Ra:90
LENS: PM-1096B 36R
DRIVER: PUP20A-1WMC 450mA
30minutes warm-up

WEC AND CCEC

Test:U:120.08V I:0.1451A P:17.330W PF:0.9933 Freq:59.98Hz Lamp Flux:1493.63x1 lm		
NAME: 2118.192-LEA-15-DW	TYPE:	WEIGHT:
SPEC.: 3000K	DIM.:	SERIAL No.: 2307120893
MFR.: RISE	SUR.: 0.0063585m2	Shielding Angle:

pcc	80%			70%			50%			30%			10%			0	
pw	50%	30%	10%	50%	30%	10%	50%	30%	10%	50%	30%	10%	50%	30%	10%	0	
pfc	20%			20%			20%			20%			20%			0	
RCR	RCR:Room Cavity Ratio						Wall Exitance Coefficients(WEC)										
0.0																	
1.0	.127	.072	.023	.122	.070	.022	.112	.064	.021	.103	.059	.019	.095	.055	.018		
2.0	.120	.066	.020	.116	.064	.020	.108	.060	.019	.100	.056	.018	.094	.053	.017		
3.0	.114	.061	.018	.110	.059	.018	.103	.056	.017	.097	.053	.016	.091	.050	.016		
4.0	.108	.056	.017	.105	.055	.016	.099	.053	.016	.094	.050	.015	.088	.048	.015		
5.0	.103	.052	.015	.100	.051	.015	.095	.049	.015	.090	.048	.014	.086	.046	.014		
6.0	.098	.049	.014	.095	.048	.014	.091	.047	.014	.087	.045	.013	.083	.044	.013		
7.0	.093	.046	.013	.091	.045	.013	.087	.044	.013	.084	.043	.012	.080	.042	.012		
8.0	.089	.044	.012	.087	.043	.012	.084	.042	.012	.081	.041	.012	.077	.040	.012		
9.0	.085	.041	.012	.084	.041	.011	.081	.040	.011	.078	.039	.011	.075	.038	.011		
10.0	.082	.039	.011	.080	.039	.011	.078	.038	.011	.075	.037	.011	.073	.036	.010		

pcc	80%			70%			50%			30%			10%			0
pw	50%	30%	10%	50%	30%	10%	50%	30%	10%	50%	30%	10%	50%	30%	10%	0
pfc	20%			20%			20%			20%			20%			0
RCR	RCR:Room Cavity Ratio						Ceiling Cavity Exitance Coefficients(CCEC)									
0.0	.149	.149	.149	.127	.127	.127	.087	.087	.087	.050	.050	.050	.016	.016	.016	
1.0	.133	.123	.114	.114	.105	.098	.078	.073	.068	.045	.042	.039	.014	.014	.013	
2.0	.120	.103	.089	.103	.089	.077	.070	.062	.054	.041	.036	.032	.013	.012	.010	
3.0	.110	.088	.072	.094	.076	.062	.065	.053	.044	.037	.031	.026	.012	.010	.008	
4.0	.101	.077	.058	.087	.066	.051	.060	.046	.036	.035	.027	.021	.011	.009	.007	
5.0	.094	.068	.048	.081	.058	.042	.055	.041	.030	.032	.024	.018	.010	.008	.006	
6.0	.088	.060	.040	.075	.052	.035	.052	.036	.025	.030	.021	.015	.010	.007	.005	
7.0	.082	.054	.034	.071	.047	.030	.049	.033	.021	.028	.019	.013	.009	.006	.004	
8.0	.078	.049	.029	.067	.043	.026	.046	.030	.018	.027	.018	.011	.009	.006	.004	
9.0	.074	.045	.026	.063	.039	.022	.044	.027	.016	.026	.016	.009	.008	.005	.003	
10.0	.070	.041	.022	.060	.036	.020	.042	.025	.014	.024	.015	.008	.008	.005	.003	

C Range: 0 - 360DEG
C Interval: 30.0DEG
Test Speed: MEDIUM
Temperature:25.3℃
Operators:zoe
Test Date:2023-7-12

γ Range: 0 - 180DEG
γ Interval: 1.0DEG
Test System:EVERFINE GO-SPEX500_V1 SYSTEM V2.00.461
Humidity:65.0%
Test Distance:3.160m [K=1.0000]
Remarks: LAMP:BXRV-DR-1830G-1000-K-23 Ra:90
LENS: PM-1096B 36R
DRIVER: PUP20A-1WMC 450mA
30minutes warm-up

UGR(Unified Glare Rating) Table

Test:U:120.08V I:0.1451A P:17.330W PF:0.9933 Freq:59.98Hz Lamp Flux:1493.63x1 lm										
NAME: 2118.192-LEA-15-DW					TYPE:			WEIGHT:		
SPEC.: 3000K					DIM.:			SERIAL No.: 2307120893		
MFR.: RISE					SUR.: 0.0063585m2			Shielding Angle:		
ceiling/cavity	0.7	0.7	0.5	0.5	0.3	0.7	0.7	0.5	0.5	0.3
walls	0.5	0.3	0.5	0.3	0.3	0.5	0.3	0.5	0.3	0.3
working plane	0.2	0.2	0.2	0.2	0.2	0.2	0.2	0.2	0.2	0.2
Room dimensions	Viewed crosswise					Viewed endwise				
x = 2H y = 2H	13.9	14.7	14.1	14.9	15.1	13.5	14.4	13.7	14.5	14.7
3H	13.8	14.5	14.0	14.7	14.9	13.4	14.2	13.6	14.4	14.6
4H	13.7	14.4	14.0	14.6	14.9	13.3	14.1	13.6	14.3	14.5
6H	13.6	14.3	13.9	14.5	14.8	13.2	13.9	13.5	14.2	14.4
8H	13.6	14.2	13.9	14.5	14.7	13.2	13.9	13.5	14.1	14.4
12H	13.5	14.2	13.8	14.4	14.7	13.2	13.8	13.5	14.1	14.3
4H 2H	13.7	14.4	14.0	14.6	14.9	13.3	14.1	13.6	14.3	14.5
3H	13.6	14.2	13.9	14.5	14.7	13.2	13.8	13.5	14.1	14.4
4H	13.5	14.1	13.8	14.4	14.7	13.1	13.7	13.5	14.0	14.3
6H	13.4	13.9	13.8	14.2	14.6	13.0	13.6	13.4	13.9	14.2
8H	13.4	13.8	13.7	14.2	14.5	13.0	13.5	13.4	13.8	14.2
12H	13.3	13.7	13.7	14.1	14.5	12.9	13.4	13.4	13.7	14.1
8H 4H	13.3	13.8	13.7	14.2	14.5	13.0	13.5	13.4	13.8	14.2
6H	13.3	13.7	13.7	14.0	14.5	12.9	13.3	13.3	13.7	14.1
8H	13.2	13.6	13.7	14.0	14.4	12.9	13.2	13.3	13.6	14.1
12H	13.2	13.5	13.6	13.9	14.4	12.8	13.1	13.3	13.5	14.0
12H 4H	13.3	13.7	13.7	14.1	14.5	12.9	13.4	13.3	13.7	14.1
6H	13.2	13.6	13.7	14.0	14.4	12.9	13.2	13.3	13.6	14.0
8H	13.2	13.5	13.6	13.9	14.4	12.8	13.1	13.3	13.5	14.0
Variations with the observer position at spacings(CIE Pub.117):										
S = 1.0H	+ 2.4 / - 6.1					+ 2.4 / - 7.1				
1.5H	+ 3.2 / - 4.1					+ 3.1 / - 4.7				
2.0H	+ 4.6 / - 7.4					+ 4.9 / - 7.9				

CIE Pub.117, 1494 lm Total Lamp Luminous Flux Correct (8log(F/F0) = 1.4)
Area: 0.0063585 m2

C Range: 0 - 360DEG
C Interval: 30.0DEG
Test Speed: MEDIUM
Temperature:25.3℃
Operators:zoe
Test Date:2023-7-12

γ Range: 0 - 180DEG
γ Interval: 1.0DEG
Test System:EVERFINE GO-SPEX500_V1 SYSTEM V2.00.461
Humidity:65.0%
Test Distance:3.160m [K=1.0000]
Remarks: LAMP:BXRV-DR-1830G-1000-K-23 Ra:90
LENS: PM-1096B 36R
DRIVER: PUP20A-1WMC 450mA
30minutes warm-up

UTILIZATION FACTORS TABLE

Test:U:120.08V I:0.1451A P:17.330W PF:0.9933 Freq:59.98Hz Lamp Flux:1493.63x1 lm		
NAME: 2118.192-LEA-15-DW	TYPE:	WEIGHT:
SPEC.: 3000K	DIM.:	SERIAL No.: 2307120893
MFR.: RISE	SUR.: 0.0063585m2	Shielding Angle:

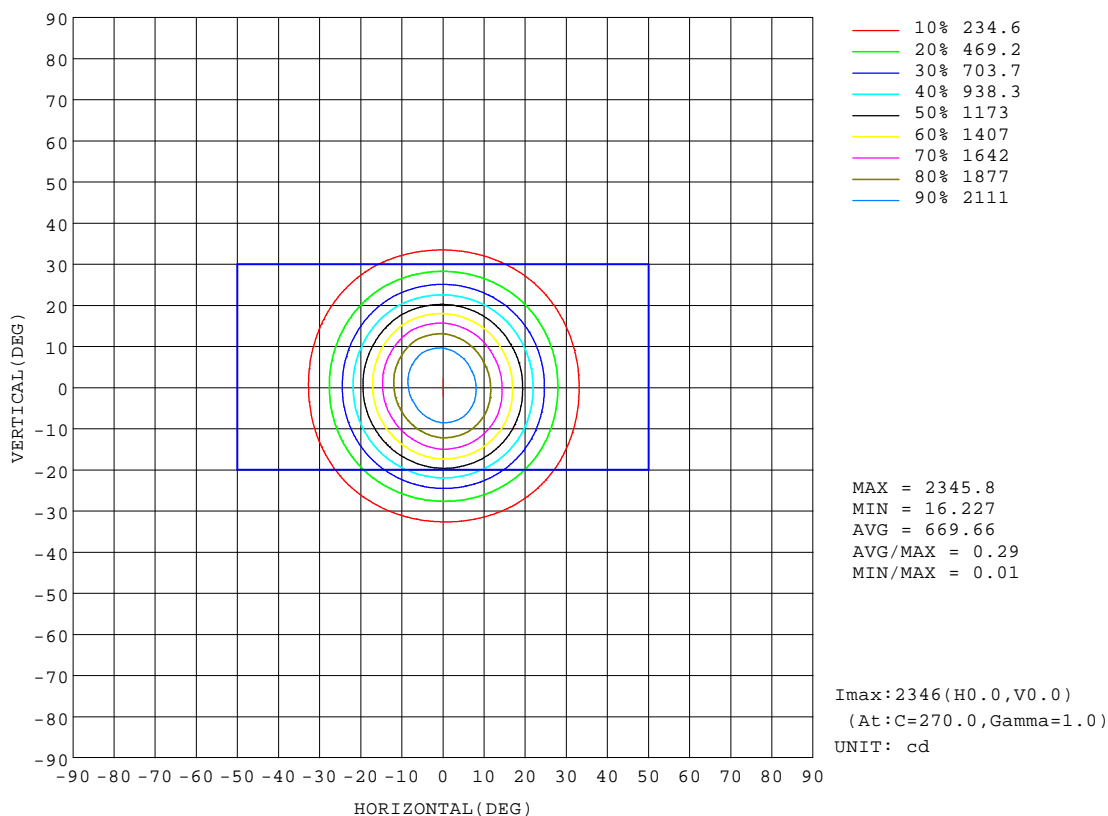
REFLECTANCE										
Ceiling	0.8	0.8	0.8	0.7	0.7	0.7	0.5	0.5	0.5	0
Walls	0.7	0.5	0.3	0.7	0.5	0.3	0.7	0.5	0.3	0
Working plane	0.2	0.2	0.2	0.2	0.2	0.2	0.2	0.2	0.2	0
ROOM INDEX	UTILIZATION FACTORS(PERCENT) $k(RI) \times RCR = 5$									
k = 0.60	68	63	60	68	63	60	67	63	60	57
0.80	74	69	67	73	69	66	73	69	66	63
1.00	78	73	70	77	73	70	76	73	70	67
1.25	81	77	74	80	76	74	78	75	73	70
1.50	83	79	77	82	79	76	80	77	75	72
2.00	85	82	79	84	81	79	82	79	77	73
2.50	86	83	81	85	82	80	82	80	79	74
3.00	87	85	83	86	84	82	83	81	80	75
4.00	89	87	85	87	85	84	84	83	82	76
5.00	90	88	87	88	87	85	85	84	83	77
ROOM INDEX	UF(total)									Direct
According to DIN EN 13032-2 2004			Suspended					SHRNOM = 1.25		

C Range: 0 - 360DEG
C Interval: 30.0DEG
Test Speed: MEDIUM
Temperature:25.3 °C
Operators:zoe
Test Date:2023-7-12

γ Range: 0 - 180DEG
γ Interval: 1.0DEG
Test System:EVERFINE GO-SPEX500_V1 SYSTEM V2.00.461
Humidity:65.0%
Test Distance:3.160m [K=1.0000]
Remarks: LAMP:BXRV-DR-1830G-1000-K-23 Ra:90
LENS: PM-1096B 36R
DRIVER: PUP20A-1WMC 450mA
30minutes warm-up

ISOCANDELA DIAGRAM

Test:U:120.08V I:0.1451A P:17.330W PF:0.9933 Freq:59.98Hz Lamp Flux:1493.63x1 lm		
NAME: 2118.192-LEA-15-DW	TYPE:	WEIGHT:
SPEC.: 3000K	DIM.:	SERIAL No.: 2307120893
MFR.: RISE	SUR.: 0.0063585m2	Shielding Angle:

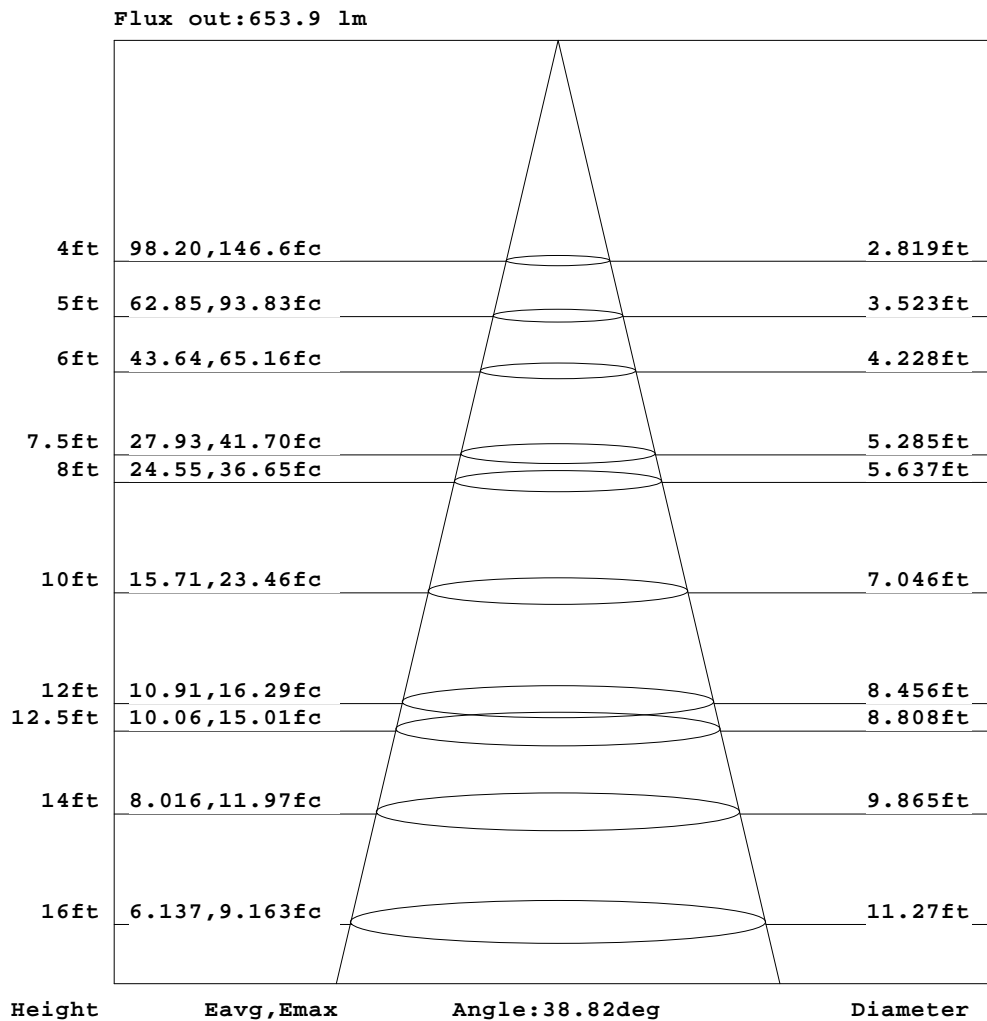


C Range: 0 - 360DEG
C Interval: 30.0DEG
Test Speed: MEDIUM
Temperature:25.3℃
Operators:zoe
Test Date:2023-7-12

γ Range: 0 - 180DEG
γ Interval: 1.0DEG
Test System:EVERFINE GO-SPEX500_V1 SYSTEM V2.00.461
Humidity:65.0%
Test Distance:3.160m [K=1.0000]
Remarks: LAMP:BXRV-DR-1830G-1000-K-23 Ra:90
LENS: PM-1096B 36R
DRIVER: PUP20A-1WMC 450mA
30minutes warm-up

AAI Figure

Test:U:120.08V I:0.1451A P:17.330W PF:0.9933 Freq:59.98Hz Lamp Flux:1493.63x1 lm		
NAME: 2118.192-LEA-15-DW	TYPE:	WEIGHT:
SPEC.: 3000K	DIM.:	SERIAL No.: 2307120893
MFR.: RISE	SUR.: 0.0063585m2	Shielding Angle:



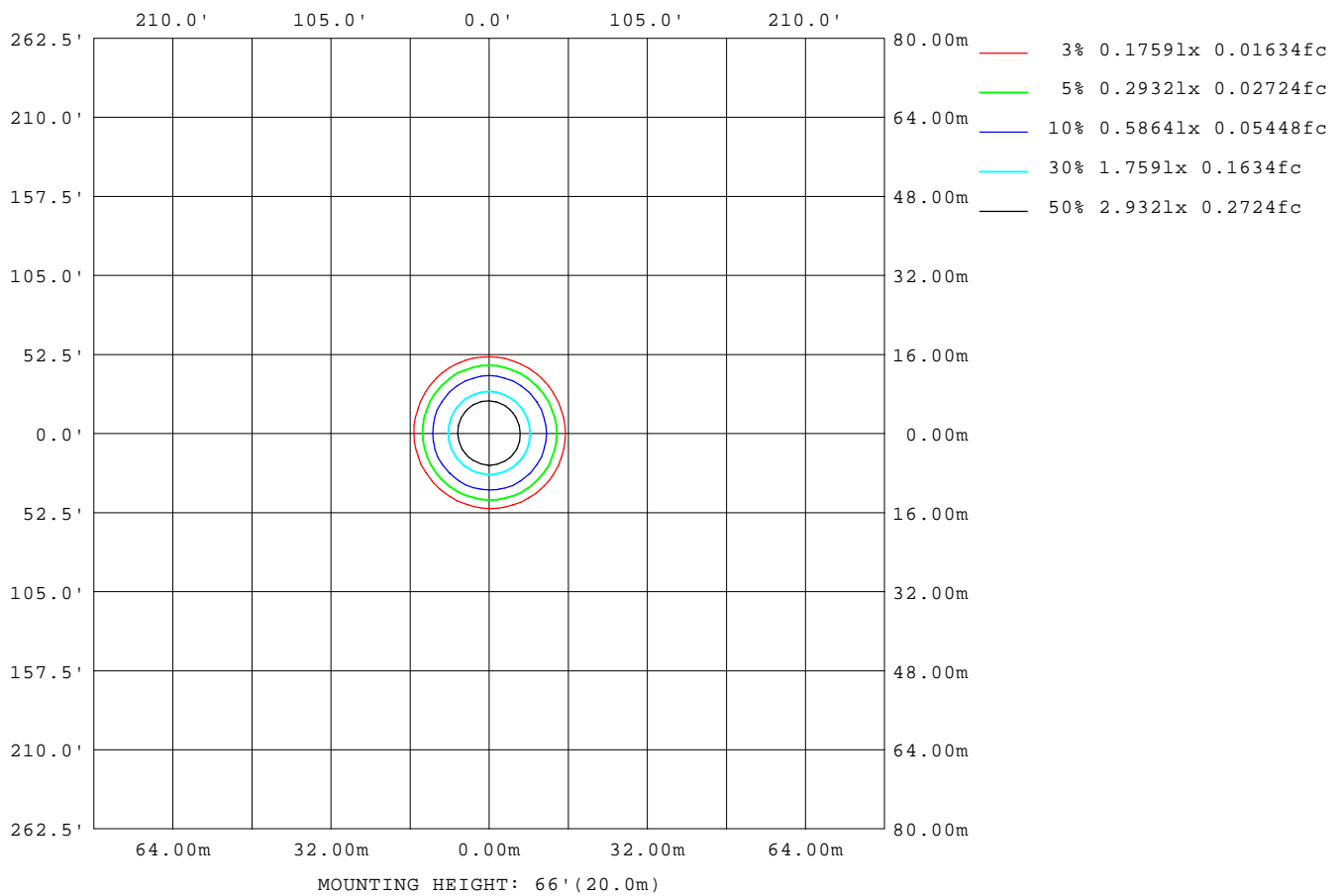
Note: The Curves indicate the illuminated area and the average illumination when the luminaire is at different distance.

C Range: 0 - 360DEG
C Interval: 30.0DEG
Test Speed: MEDIUM
Temperature: 25.3°C
Operators: zoe
Test Date: 2023-7-12

γ Range: 0 - 180DEG
γ Interval: 1.0DEG
Test System: EVERFINE GO-SPEX500_V1 SYSTEM V2.00.461
Humidity: 65.0%
Test Distance: 3.160m [K=1.0000]
Remarks: LAMP: BXR V-DR-1830G-1000-K-23 Ra: 90
LENS: PM-1096B 36R
DRIVER: PUP20A-1WMC 450mA
30minutes warm-up

ISOLUX DIAGRAM

Test:U:120.08V I:0.1451A P:17.330W PF:0.9933 Freq:59.98Hz Lamp Flux:1493.63x1 lm		
NAME: 2118.192-LEA-15-DW	TYPE:	WEIGHT:
SPEC.: 3000K	DIM.:	SERIAL No.: 2307120893
MFR.: RISE	SUR.: 0.0063585m2	Shielding Angle:



C Range: 0 - 360DEG
C Interval: 30.0DEG
Test Speed: MEDIUM
Temperature:25.3°C
Operators:zoe
Test Date:2023-7-12

γ Range: 0 - 180DEG
γ Interval: 1.0DEG
Test System:EVERFINE GO-SPEX500_V1 SYSTEM V2.00.461
Humidity:65.0%
Test Distance:3.160m [K=1.0000]
Remarks: LAMP:BXRV-DR-1830G-1000-K-23 Ra:90
LENS: PM-1096B 36R
DRIVER: PUP20A-1WMC 450mA
30minutes warm-up

LED Avg.L Report

Test:U:120.08V I:0.1451A P:17.330W PF:0.9933 Freq:59.98Hz Lamp Flux:1493.63x1 lm		
NAME: 2118.192-LEA-15-DW	TYPE:	WEIGHT:
SPEC.: 3000K	DIM.:	SERIAL No.: 2307120893
MFR.: RISE	SUR.: 0.0063585m2	Shielding Angle:

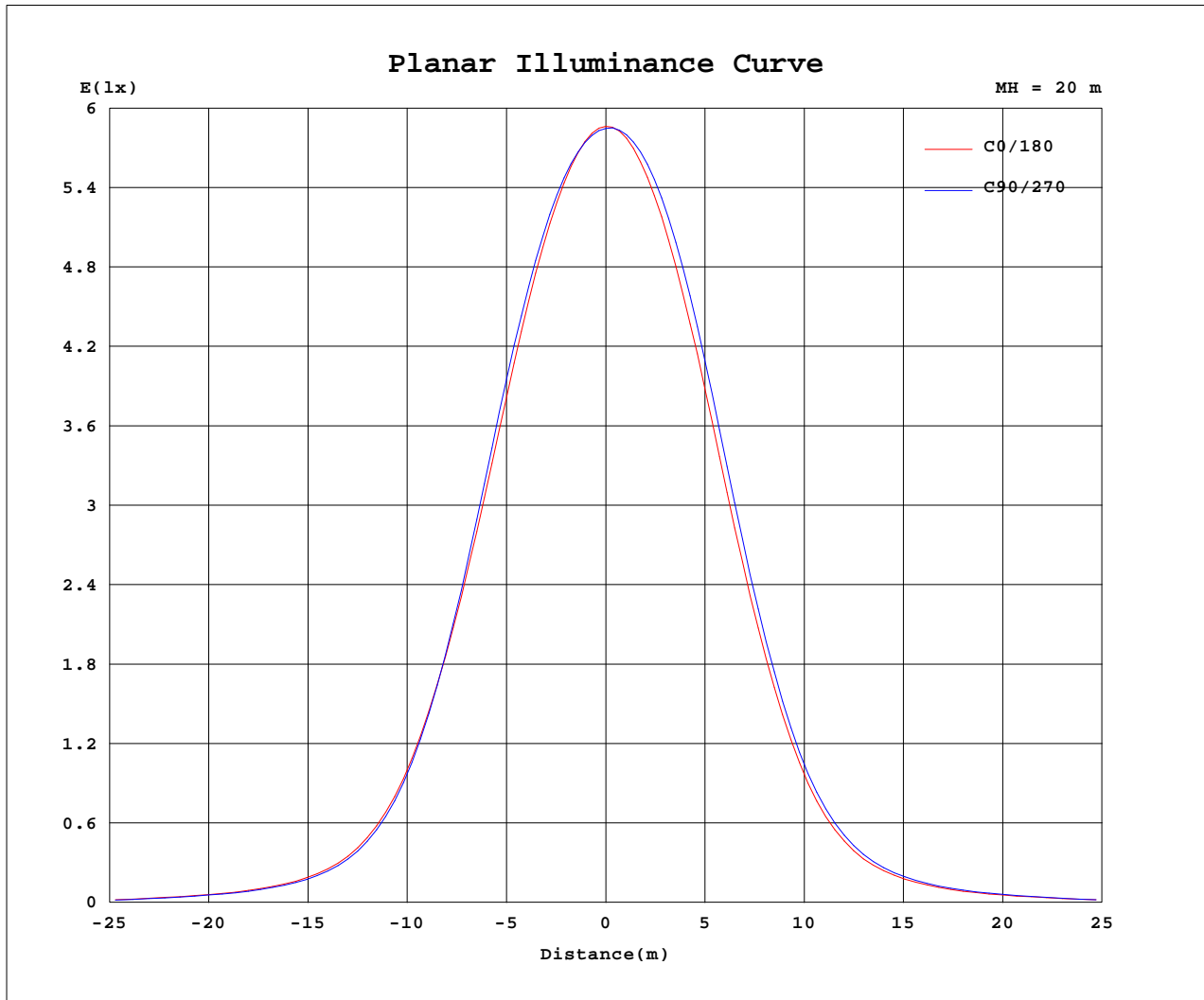
AvgL	cd/m2
L_0~180(65)av	1337
L_0~180(75)av	921
L_0~180(85)av	609
L_90~270(65)av	1081
L_90~270(75)av	751
L_90~270(85)av	251
L_45(65)av	1261
L_45(75)av	828
L_45(85)av	351

Standard: GB/T 29293-2012

C Range: 0 - 360DEG
C Interval: 30.0DEG
Test Speed: MEDIUM
Temperature:25.3℃
Operators:zoe
Test Date:2023-7-12

γ Range: 0 - 180DEG
γ Interval: 1.0DEG
Test System:EVERFINE GO-SPEX500_V1 SYSTEM V2.00.461
Humidity:65.0%
Test Distance:3.160m [K=1.0000]
Remarks: LAMP:BXRV-DR-1830G-1000-K-23 Ra:90
LENS: PM-1096B 36R
DRIVER: PUP20A-1WMC 450mA
30minutes warm-up

Planar Illuminance Curve



C Range: 0 - 360DEG
 C Interval: 30.0DEG
 Test Speed: MEDIUM
 Temperature: 25.3 °C
 Operators: zoe
 Test Date: 2023-7-12

γ Range: 0 - 180DEG
 γ Interval: 1.0DEG
 Test System: EVERFINE GO-SPEX500_V1 SYSTEM V2.00.461
 Humidity: 65.0%
 Test Distance: 3.160m [K=1.0000]
 Remarks: LAMP: BXRV-DR-1830G-1000-K-23 Ra: 90
 LENS: PM-1096B 36R
 DRIVER: PUP20A-1WMC 450mA
 30minutes warm-up

LUMINOUS DISTRIBUTION INTENSITY DATA

Test:U:120.08V I:0.1451A P:17.330W PF:0.9933 Freq:59.98Hz Lamp Flux:1493.63x1 lm		
NAME: 2118.192-LEA-15-DW	TYPE:	WEIGHT:
SPEC.: 3000K	DIM.:	SERIAL No.: 2307120893
MFR.: RISE	SUR.: 0.0063585m2	Shielding Angle:

Table--1

UNIT: cd

C(DEG) γ (DEG)	0	30	60	90	120	150	180	210	240	270	300	330						
0	2341	2341	2341	2341	2341	2341	2341	2341	2341	2341	2341	2341						
5	2245	2254	2260	2260	2250	2247	2260	2284	2302	2296	2272	2254						
10	1987	2019	2039	2033	2005	1990	2009	2061	2103	2091	2038	1994						
15	1582	1630	1648	1645	1602	1588	1609	1661	1724	1706	1650	1591						
20	1112	1138	1143	1138	1113	1105	1116	1148	1203	1194	1163	1121						
25	676	681	674	664	654	653	659	677	707	710	697	685						
30	356	358	352	339	331	332	338	351	369	370	365	359						
35	185	188	182	174	169	170	175	184	195	192	188	186						
40	108	109	106	102	99.3	100	102	107	113	111	110	108						
45	68.3	68.8	67.6	65.0	63.4	63.9	64.8	67.6	71.0	70.4	69.3	68.5						
50	40.8	41.9	39.4	36.9	37.9	39.3	39.3	40.6	41.2	40.0	40.7	40.6						
55	20.1	21.0	18.1	16.5	17.8	19.7	19.5	19.9	18.7	17.4	19.2	19.7						
60	7.67	8.12	5.98	5.56	5.94	7.58	7.32	7.32	5.83	5.55	6.05	7.33						
65	3.55	3.71	3.17	2.97	3.27	3.74	3.63	3.53	3.07	2.84	3.06	3.42						
70	2.05	2.09	1.93	1.91	1.96	2.17	2.13	1.99	1.73	1.69	1.69	1.88						
75	1.48	1.45	1.37	1.30	1.42	1.52	1.55	1.38	1.24	1.17	1.21	1.33						
80	0.83	0.81	0.70	0.66	0.74	0.88	0.95	0.78	0.63	0.58	0.62	0.73						
85	0.29	0.24	0.17	0.16	0.19	0.30	0.39	0.24	0.14	0.12	0.13	0.19						
90	0.00	0.00	0.00	0.00	0.00	0.00	0.00	0.00	0.00	0.00	0.00	0.00						
95	0.00	0.00	0.00	0.00	0.00	0.00	0.00	0.00	0.00	0.00	0.00	0.00						
100	0.00	0.00	0.00	0.00	0.00	0.00	0.00	0.00	0.00	0.00	0.00	0.00						
105	0.00	0.00	0.00	0.00	0.00	0.00	0.00	0.00	0.00	0.00	0.00	0.00						
110	0.00	0.00	0.00	0.00	0.00	0.00	0.00	0.00	0.00	0.00	0.00	0.00						
115	0.00	0.00	0.00	0.00	0.00	0.00	0.00	0.00	0.00	0.00	0.00	0.00						
120	0.00	0.00	0.00	0.00	0.00	0.00	0.00	0.00	0.00	0.00	0.00	0.00						
125	0.00	0.00	0.00	0.00	0.00	0.00	0.00	0.00	0.00	0.00	0.00	0.00						
130	0.00	0.00	0.00	0.00	0.00	0.00	0.00	0.00	0.00	0.00	0.00	0.00						
135	0.00	0.00	0.00	0.00	0.00	0.00	0.00	0.00	0.00	0.00	0.00	0.00						
140	0.00	0.00	0.00	0.00	0.00	0.00	0.00	0.00	0.00	0.00	0.00	0.00						
145	0.00	0.00	0.00	0.00	0.00	0.00	0.00	0.00	0.00	0.00	0.00	0.00						
150	0.00	0.00	0.00	0.00	0.00	0.00	0.00	0.00	0.00	0.00	0.00	0.00						
155	0.00	0.00	0.00	0.00	0.00	0.00	0.00	0.00	0.00	0.00	0.00	0.00						
160	0.00	0.00	0.00	0.00	0.00	0.00	0.00	0.00	0.00	0.00	0.00	0.00						
165	0.00	0.00	0.00	0.00	0.00	0.00	0.00	0.00	0.00	0.00	0.00	0.00						
170	0.00	0.00	0.00	0.00	0.00	0.00	0.00	0.00	0.00	0.00	0.00	0.00						
175	0.00	0.00	0.00	0.00	0.00	0.00	0.00	0.00	0.00	0.00	0.00	0.00						
180	0.00	0.00	0.00	0.00	0.00	0.00	0.00	0.00	0.00	0.00	0.00	0.00						

C Range: 0 - 360DEG
C Interval: 30.0DEG
Test Speed: MEDIUM
Temperature:25.3℃
Operators:zoe
Test Date:2023-7-12

γ Range: 0 - 180DEG
γ Interval: 1.0DEG
Test System:EVERFINE GO-SPEX500_V1 SYSTEM V2.00.461
Humidity:65.0%
Test Distance:3.160m [K=1.0000]
Remarks: LAMP:BXRV-DR-1830G-1000-K-23 Ra:90
LENS: PM-1096B 36R
DRIVER: PUP20A-1WMC 450mA
30minutes warm-up